



## Alpha House, Santley Street, Clapham, SW4

1 bedroom flat for sale

**£435,000**

Share of Freehold

### Property Details

A split level one bedroom apartment within a Grade II Listed, Victorian school conversion. Alpha House is a sought-after, gated development, equidistant to Clapham and Brixton, which are easily reached within a five-minute walk. This apartment has stunning floor to ceiling windows, striking parquet flooring, double height ceilings, while a spacious living area offers plenty of space to relax and dine. Upstairs, the double bedroom benefits from an ensuite bathroom and a fantastic walk-in wardrobe. There is a residents' gym and sauna, beautifully manicured grounds and an off-street parking space

### Features

- Shared garden
- Victorian
- Secure gated development
- Well kept communal grounds
- Walking distance to the northern and victoria tube lines

Council tax band D

EPC rating (null)







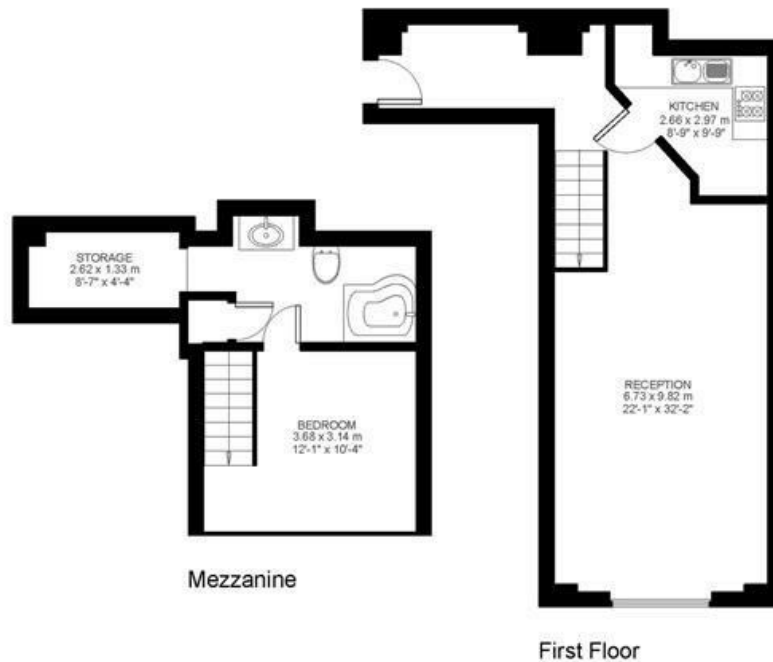
1 Bed flat

**Approx internal area:**

**676 sqft 63 sqm**

While we do try our very best, floor plans are produced as a guide only and we take no responsibility for the precise accuracy with which any property is represented

Santley Street





Alpha House, Santley Street, Clapham, SW4

